

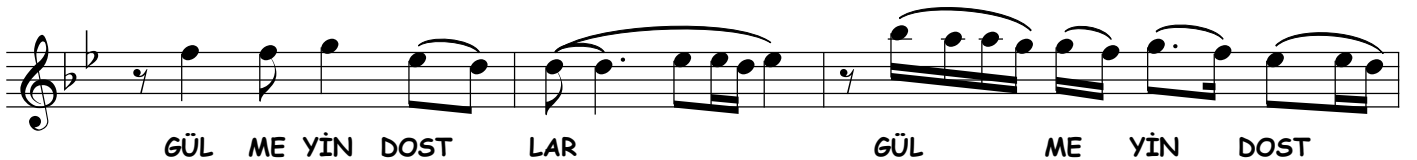
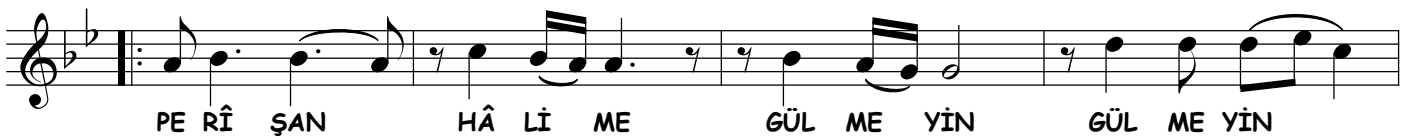
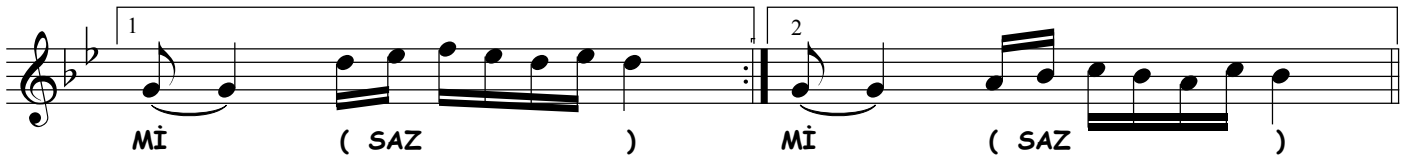
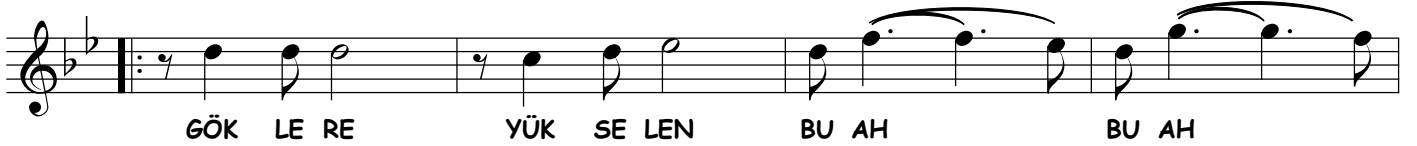
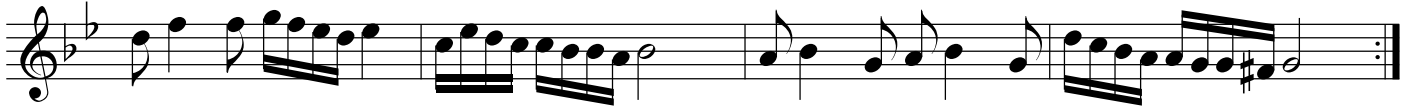
NIHÂVEND ŞARKI

USÛLÜ : DÜYEK

GÖKLERE YÜKSELEN BU AH BENİM Mİ

MÜZİK : MUZAFFER İLKAR

SÖZ : MAHMUT GOLOĞLU



LAR (SAZ) LAR (SAZ)

BİR GÜ ZEL SEV DİM SE GÜ NAH GÜ NAH

GÜ NAH BE NİM Mİ (SAZ) GÜ NAH BE NİM

Mİ (SAZ) Mİ (SON)

Faruk Pakin

GÖKLERE YÜKSELEN BU AH BENİM Mİ ?
KÂLBİME YERLEŞEN BU AŞK SENİM Mİ ?
PERİŞAN HÂLİME GÜLMİYİN DOSTLAR,
BİR GÜZEL SEVDİMSE GÜNAH BENİM Mİ ?